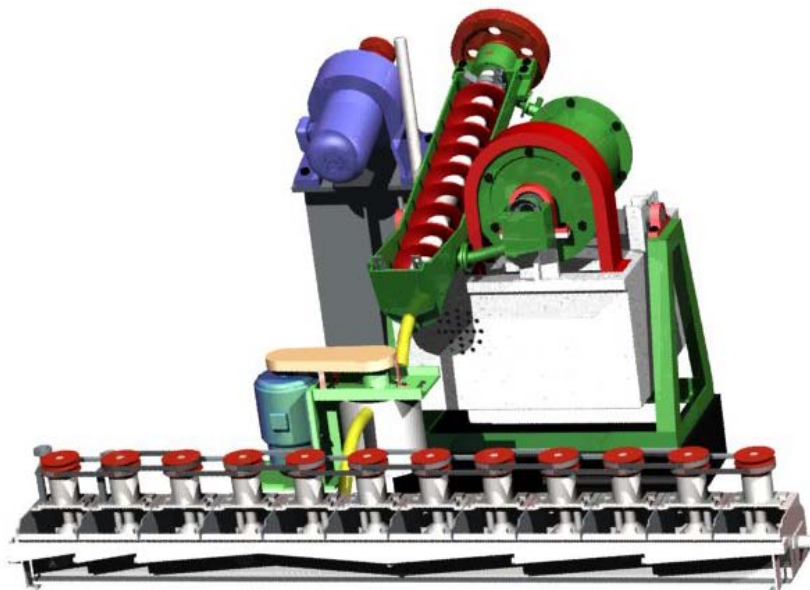


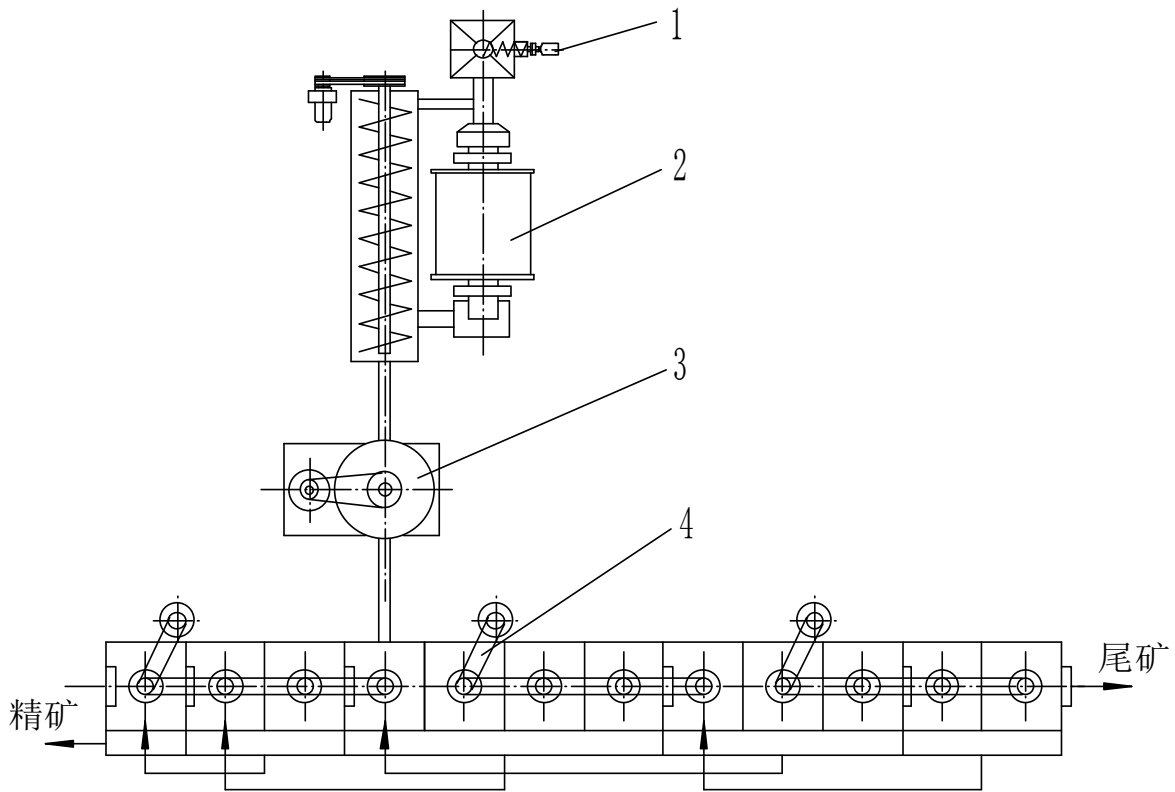
# 一、完全模拟生产流程 选矿试验系列设备 Ore Testing Series Equipment Fully Simulating Production Flow

- ★ 与现场选矿工艺流程完全一致，指导性强。
  - ★ 可根据矿石性质的变化，找出各种最佳生产操作条件，指导生产技术指标达到最佳状态。
  - ★ 类似于“傻瓜相机”，不需要高精尖技术人员就可以操作。
  - ★ 更快捷地调试试验流程，避免调试生产流程改造的损失。
  - ★ 闭路流程。
  - ★ 较少的投资，换来生产技术指标的始终最佳状态，经济效益显著。
  - ★ 像“积木”一样，可根据需要拆装组合。
  - ★ 结构紧凑，占地面积小。
- 
- ★ In full accord with technological flow of field mineral separation, provide good instruction.
  - ★ Select optimum production operating condition according to the changes of mineral feature, instruct the production technical index to achieve optimum condition.
  - ★ Just like “Foolproof Camera”, it can be operated not exclusively by high sophisticated technicians.
  - ★ Easily debug test flow and avoid the reconstructive loss of debugging production flow.
  - ★ Close-circuit flow.
  - ★ With comparatively small investment, the production technical index can retain permanent premium condition and economical benefit is remarkable.
  - ★ Just like “toy bricks”, it can be dismantled and assembled as required.
  - ★ Compact structure, small covering area.



您需要的，正是我们能做到的！  
What you need is what we can do!

# 1. 磨矿浮选流程连续试验设备 Continuous Test Equipment for Grinding Flotation Flow



1—螺旋给料机 Spiral feeder    2—磨矿分级联合机组 Grinding & classifying aggregate unit  
 3—搅拌槽 Agitation tank    4—浮选机组 Flotation cell cluster

图 1 磨矿浮选流程连续试验设备参考工艺流程

Chart 1:

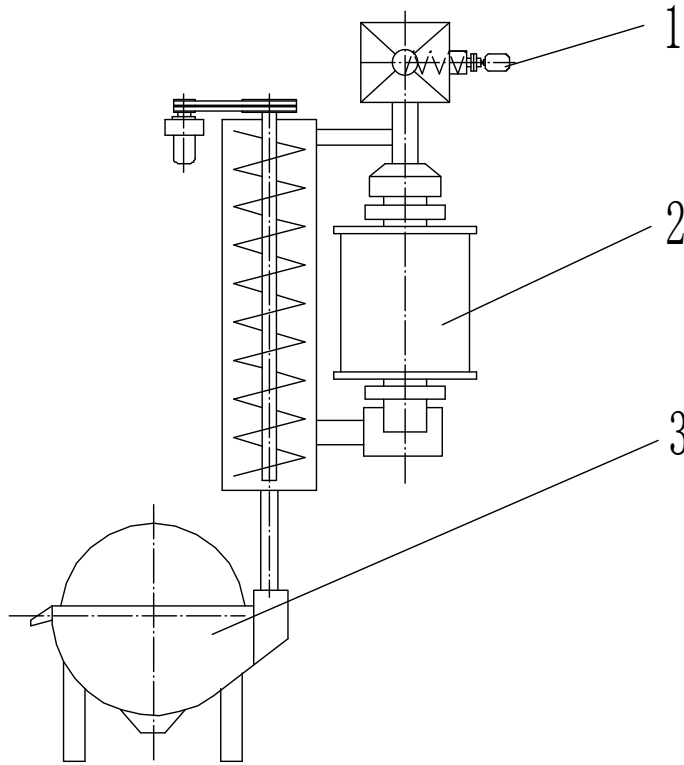
Referential technological flow of continuous test equipment for grinding flotation flow

磨矿浮选流程连续试验设备参考配置表

Referential configuration table of continuous test equipment for grinding flotation flow  
 表 1 Table 1

可试验样品量 Allowed Sample amount for test (kg/h)	设备名称 Equipment name	设备规格 Equipment specification	数量 (台) Quantity (Set)	功率 Power (kw)	备注 Remark
4~10	螺旋给料机 Spiral feeder	LXG-26	1	0.55	可调节给矿量 Feeding amount is adjustable
	磨矿分级联合机组 Grinding & classifying aggregate unit	SMF-150	1	1.47	
	搅拌槽 Agitation tank	JB-150	1	0.18	
	浮选机组 Flotation cell cluster	FX-15	12	1.83	流程与槽数可与 现场一致 Flow and tank number are in accord with the locale
10~15	螺旋给料机 Spiral feeder	LXG-26	1	0.55	可调节给矿量 Feeding amount is adjustable
	磨矿分级联合机组 Grinding & classifying aggregate unit	SMF-240	1	2.05	
	搅拌槽 Agitation tank	JB-200	1	0.37	
	浮选机组 Flotation cell cluster	FX-3	12	2.56	流程与槽数可与 现场一致 Flow and tank number are in accord with the locale

## 2. 磨矿弱—中磁选流程连续试验设备 Continuous Test Equipment for Grinding Weak-Medium Magnetic Separation Flow



1—螺旋给料机 Spiral feeder 2—磨矿分级联合机组 Grinding & classifying aggregate unit 3—筒式磁选机 Cylindrical magnetic separator

图 2 磨矿弱—中磁流程连续试验设备参考工艺流程

Chart 2:

Referential technological flow of continuous test equipment for grinding weak-medium magnetic separation flow

磨矿弱—中磁流程连续试验设备参考配置表

Referential configuration table of continuous test equipment for grinding weak-medium magnetic separation flow

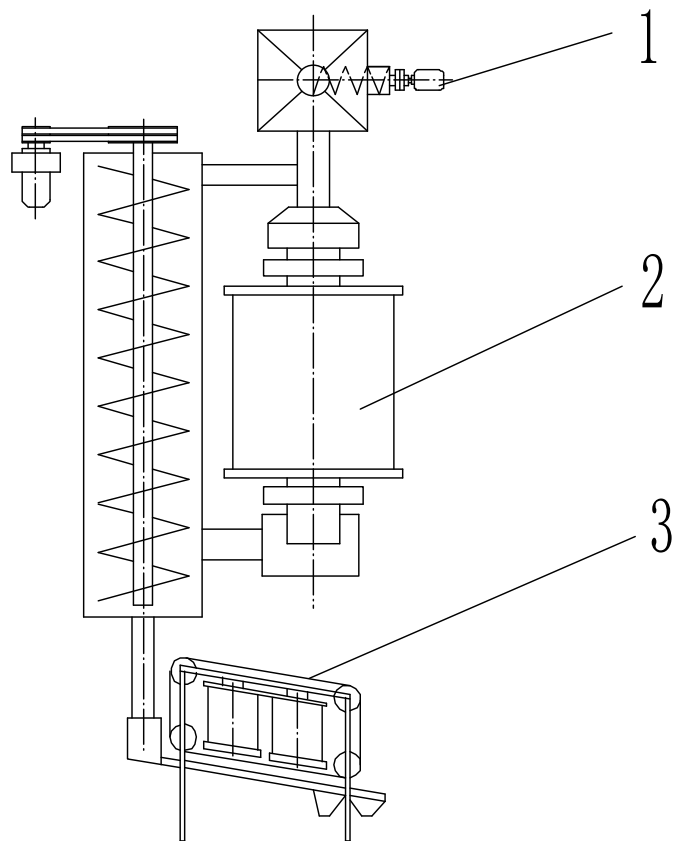
表 2 Table 2

可试验样品量 Allowed sample amount for Test kg/h	设备名称 Equipment name	设备规格 Equipment specification	数量 Quantity 台 Set	功率 Power kw	备注 Remark
4~10	螺旋给料机 Spiral feeder	LXG-26	1	0.55	可调节给矿量 Feeding amount is adjustable
	磨矿分级联合机组 Grinding & classifying aggregate unit	SMF-150	1	1.47	
	筒式磁选机 Cylindrical magnetic separator	DCX300	1	0.55	可无级调节磁感应强度 Infinitely variable control the magnetic induction intensity 0~ <b>0.5T</b>
10~15	螺旋给料机 Spiral feeder	LXG-26	1	0.55	可调节给矿量 Feeding amount is adjustable

	磨矿分级联合机组 Grinding & classifying aggregate unit	SMF-240	1	2.05	
	筒式磁选机 Cylindrical magnetic separator	DCX300	1	0.55	可无级调节磁感应强度 Infinitely variable control the magnetic induction intensity 0~ <b>0.5T</b>

### 3. 磨矿中—强磁选流程连续试验设备

### Continuous Test Equipment for Grinding Medium-Strong Magnetic Separation Process



1—螺旋给料机 Spiral feeder 2—磨矿分级联合机组 Grinding & classifying aggregate unit 3—中强磁选机  
Medium- strong magnetic separator

图3 磨矿中—强磁选流程连续试验设备参考工艺流程

Referential technical flowchart of continuous test equipment for grinding medium-strong magnetic separation flow

磨矿中—强磁选流程连续试验设备参考配置表

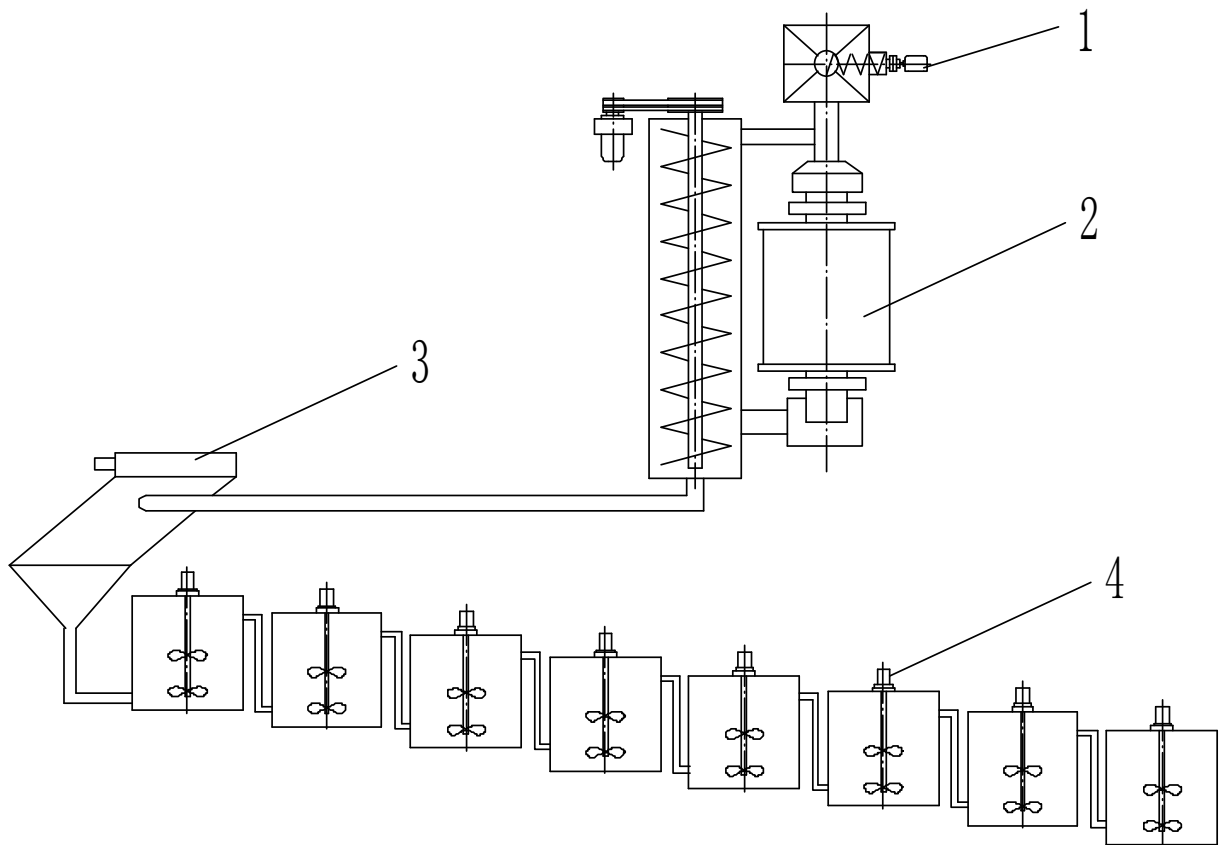
Referential Configuration table of continuous test equipment for grinding medium-strong magnetic separation process for reference

表 3 Table3

可试验样品量 Allowed sample amount for Test kg/h	设备名称 Equipment name	设备规格 Equipment specification	数量 Quantity 台 Set	功率 Power kw	备注 Remark
4~10	螺旋给料机 spiral feeder	LXG-26	1	0.55	可调节给矿量 Feeding amount is adjustable
	磨矿分级联合机组 grinding & classifying aggregate unit	SMF-150	1	1.47	
	中高场强磁选机 medium- strong magnetic separator	CXJ400	1	0.55	可无级调节磁感应强度 Infinitely variable control the magnetic induction intensity <b>0.2~1.2T</b>
10~15	螺旋给料机 spiral feeder	LXG-26	1	0.55	可调节给矿量 Feeding amount is adjustable
	磨矿分级联合机组 grinding & classifying aggregate unit	SMF-240	1	2.05	
	中高场强磁选机 medium- strong magnetic separator	CXJ400	1	0.55	可无级调节磁感应强度 Infinitely variable control the magnetic induction intensity <b>0.2~1.2T</b>

#### 4. 磨矿氰化浸出流程连续试验设备

### Continuous Test Equipment for Grinding Cyaniding Leaching Flow



1—螺旋给料机 Spiral feeder 2—磨矿分级联合机组 Grinding & classifying aggregate unit 3—斜板浓缩机 Chute board thickener 4—浸出槽 Leaching tank

图4 磨矿氰化浸出流程连续试验设备参考工艺流程

Chart 4:

Referential technical flowchart of continuous test equipment for grinding cyaniding leaching flow

磨矿氰化浸出流程连续试验设备参考配置表

Referential configuration table of Continuous Test Equipment for Grinding Cyaniding Leaching Flow

表4 Table 4

可试验样品量 Allowed sample amount for test kg/h	设备名称 Equipment name	设备规格 Equipment specification	数量 Quantity 台 set	功率 Power kw	备注 Remark
4~5	螺旋给料机 Spiral feeder	LXG-26	1	0.55	可调节给矿量 Feeding amount is adjustable
	磨矿分级联合机组 Grinding & classifying aggregate unit	SMF-150	1	1.47	
	斜板浓缩机 Chute board thickener	SXJ-300	1	—	
	浸出槽 Leaching tank	SJC-350×400	8	0.55	

## 二、 试验室用破碎筛分设备

# Laboratory Crushing & Screening Equipment

## 5. 试验室用颞式破碎机 Laboratory Jaw Crusher

- ▲ 适用于破碎抗压强度 $\leq 250\text{Mpa}$ 的各种矿石和物料
- ★ 破碎产品不混样
- ★ 易清扫
- ★ 破碎比大
- ★ 粒度均匀
- ★ 出料粒度大小可调
- ▲ Apply to crush any kind of ore and material with crushing resistance  $\leq 250\text{Mpa}$
- ★ Crushed products don't mix.
- ★ Easy to clean.
- ★ High crushing ratio.
- ★ Uniform particle size.
- ★ Discharging particle size is adjustable.

### 试验室用颞式破碎机技术参数

Technical parameter of Laboratory jaw crusher

表 5 Table 5

型号 Model	处理能力 Capacity t/h	给料口 Feeding inlet mm	给料粒度 Feeding particle Size mm	排料粒度 Discharging particle Size mm	主轴转速 Rotating speed of main shaft rpm	电机功率 Motor power kw	主机重量 Weight of principal machine kg
XPC100×60	0.2~0.4	100×60	$\leq 45$	6~10	650	1.5	75
XPC150×100	0.4~1.8	150×100	$\leq 90$	5~25	380	2.2	190
XPC150×125	0.5~2	150×125	$\leq 100$	5~30	375	3	417
XPC200×150	1~3.5	200×150	$\leq 140$	6~38	375	5.5	691

## 6. 试验室用 XPS 超细碎破碎机

### Laboratory XPS Superfine Crusher

- ▲ 适用于破碎抗压强度 $\leq 250\text{Mpa}$ 的各种矿石和物料

- ★ 采用先进的层压破碎理论，破碎比大，一次破碎产品中-2mm 可高达 80%以上
- ★ 排料粒度均匀
- ★ 处理量大
- ★ 钢耗低
- ★ 粉尘低
- ★ Apply to crush all kinds of ore and material with crushing resistance  $\leq 250\text{Mpa}$ .
- ★ Adopt the advanced laminating crushing theory, the crushing ratio is high and the products with -2mm after the first crushing is as high as 80%.
- ★ Uniform discharging particle.
- ★ High capacity.
- ★ Low steel consumption.
- ★ Less dust and powder.

#### 试验室用 XPS 超细破碎机技术参数

Technical parameter of Laboratory xps superfine crusher

表 6 Table 6

型号 Model	破碎辊 Crushing roller mm	功率 Power kw	主轴转速 Rotating speed of main shaft rpm	给料粒度 Feeding particle size mm	处理能力 Capacity kg/h	排料口 Discharging outlet mm
XPS-150	$\phi 150 \times 200$	4	800	$\leq 40$	400~1200	3~10

## 7. 试验室用双辊破碎机

### Laboratory Double Roll Crusher

- ▲ 适宜破碎中碎、细碎各种矿物
- 密封式机型，具有料样损失率低，无粉尘外溢，无环境污染的优点
- 破碎效率高
- 噪音低
- Apply to crush all kinds of medium and superfine crushing minerals.
- Sealed machine type, having the advantages of low material loss, no dust overflow and no pollution to environment.
- High crushing efficiency.
- Low noise.

#### 试验室用双辊破碎机技术参数

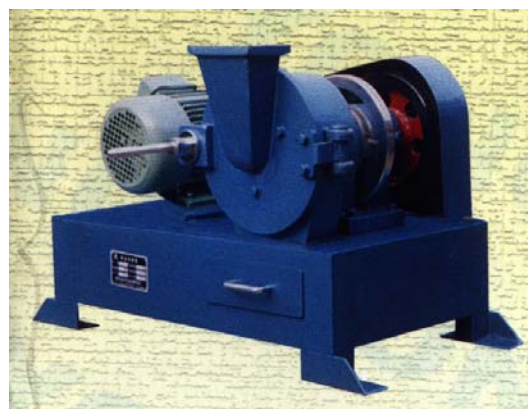
Technical parameter of Laboratory double roller crusher

表 7 Table 7

型号 Model	处理量 Capacity t/h	轧辊尺寸 Roller Dimension mm	粒度 particle size mm		轧辊转速 Rotating Speed of Roller r/min	电动机 electromotor		重 量 Weight kg
			给料 Feeding	排料 Discha rging		型号 Model	功 率 Power kw	
XPZ $\phi$ 200×75	100	200×75	-10	<3	400	Y90L-4	1.5	230
XPZ $\phi$ 200×125	200	200×125	-10	<3	400	Y100L <sub>1</sub> -4	3	315
XPZ $\phi$ 200×150	300	200×150	-13	<3	400	Y100L <sub>1</sub> -4	3	350

## 8. 圆盘粉碎机 Disk Crusher

- ▲ 该机可将物料一次性破碎至 80 目以下
- 易清扫，无粉尘外溢
- 体积小，噪音低
- This crusher can one-off crush the materials to particles lower than 80 mesh.
- Easy to clean, no dust overflow.
- Small volume, low noise.



### 圆盘粉碎机技术参数

Technical parameter of disk crusher

表 8 Table 8

型号 Model	磨 盘 直 径 Diameter of Grinding Disk mm	给 料 粒 度 Feeding Particle Size mm	出 料 粒 度 Discharging Particle Size mm	处 理 量 Capacity kg/h	电 机 功 率 Motor Power kw
150	150	≤2	0.1	20	1.5
175	175	≤3	0.1	25	1.5
200	200	≤6	0.2	60	2.2
250	250	≤8	0.3	80	3
300	300	≤10	0.4	100	4

## 9. 实验室用破碎缩分联合制样机

### Laboratory Crushing & Splitting United Sampling Machine

- 该机可连续完成筛分，破碎和缩分，将物料缩制成粒度不超过  $\phi$  13mm 与  $\phi$  6mm，重量为入料量 1/8 的试样
- 破碎、筛分、缩分
- It can finish screening, crushing, split continuously, reduce the materials to samples not larger than 6mm or 13mm and with weight of 1/8 of feeding amount.

- Crush, screen and split samples

### 实验室用破碎缩分联合制样机技术参数

Technical parameter of Laboratory crushing & splitting united sampling machine

表 9 Table 9

型号 Model	入料粒度 Feeding particle size mm	适应 水分 Adaptive moisture	缩分比 Splitting ratio	精确度 Accuracy		处理量 Capacity (kg/h)		主轴转 速 Rotating speed of main shaft rpm	功率 Power kw
				≤ 13mm	≤ 6mm	≤13mm	≤6mm		
EPS-1/8	≤60	≤11%	1/8	0.7%	0.4%	300-500	200-300	650	1.5

## 10. 实验室用密封锤/颚式破碎缩分制样机

### Laboratory Sealed Hammer/Jaw Crushing & Splitting Sampling Machine

- 该机能对不同硬度的物料进行破碎，缩分一次性作业
- 破碎效果优良
- 缩分比可自行调节，缩分准确
- 不粘不堵物料
- 密封性能好
- It can crush materials with different hardness and split one-off.
- Good crushing effect.
- Splitting ratio is adjustable, accurate splitting.
- Not stick to or block material.
- Good sealing effect.



### 实验室用密封锤/颚式破碎缩分制样机技术参数

Technical parameter of Laboratory sealed hammer/jaw crushing splitting sampling machine

表 10 Table 10

型号 Model	进料粒度 Feeding Particle Size mm	出料粒度 Discharging Particle Size mm	适应水分 Adaptive Moisture	处理量 Capacity kg/h	电机功率 Motor Power kw	整机重量 Weight of whole machine kg
120	≤120	≤3-13mm(可调) (Adjustable)	≤18% (全水分)(Full moisture)	200-1000	3	260
150	≤150			300-1200	3	280



您需要的，正是我们能做到的！  
What you need is what we can do!

## 11. 多级破碎缩分联合制样机

### Multistage Crushing & Splitting United Sampling Machine

- ▲ 可对各种不同硬度的物料进行快速破碎、混样、碎粉、缩分
- 缩分比可调
- 进料粒度大，出料粒度均匀，出料口大小可调
- 破碎时不受样料含水量大的影响，破碎效果好，不堵料，不失原料水分
- 可代替手工完成多个制样步骤，免除人工操作误差
- 密封性能好，无粉尘污染
- Rapid crush, mix, grind, split materials with different hardness.
- Splitting ratio is adjustable.
- Large feeding particle size, uniform discharging particle size, adjustable discharging outlet.
- Not affected by high moisture content during crushing, good crushing effect, no block of material, no moisture loss of material.
- Finish several sampling steps instead of manual work and avoid manual operation error.
- Good sealing effect, no dust pollution.

#### 多级破碎缩分联合制样机技术参数

Technical parameter of multistage crushing & splitting united sampling machine

表 11 Table 11

型号 Model	自动送料量 Automatic feeding amount Kg/min	一级破碎 进料粒度 Feeding particle size of the first stage crushing mm	一级破碎出料 粒度 Discharging particle size of the first stage crushing mm	一级破碎缩分 比 Splitting ratio of the first stage crushing	一级破碎处理量 Capacity of the first stage crushing kg/h	二级破碎进料粒度 Feeding particle size of the second stage crushing mm	二级破碎缩分比 Reduction & separation ratio of the second stage crushing	功率 Power kw	适应水分 Adaptive moisture %
TY150	10-120	150	≤6~13 可调	1/2、1/4、1/8、1/16(可调)(Adjustable)	1000-2000	≤6~13 可调 Adjustable	1/2	5.5	-18
TY150-A					600-720				
TY150-B				1/2、1/4、1/8、1/16 (选择其中之一)(Choose one among them)	500-1000		1/2、1/4、1/8、1/16 (选择其中之一)(Choose one among them)		

## 12. 试验室用筛分机

### Laboratory Screen



您需要的就是我们能做到的!  
What you need is what we can do!

## 试验室用筛分机技术参数

Technical parameter of Laboratory screen

表 12 Table 12

名称 Name	型号 Model	筛网尺寸 Screen dimension mm	筛孔尺寸 Mesh dimension 目/mesh	筛子层数 Screen decks	给料粒度 Feeding Particle Size	电机功率 Motor power	重量 Weight
标准筛振筛机 Standard vibrating screen	XSB-70A	φ 200	20,40,60,80,100,120,140,160,180,200	5-7	0~0.5	0.37	107
		φ 300					128
拍击式标准筛振筛机 Flapping standard vibrating screen	XSBP-200	φ 200	12,24,40,70,150,16,36,60,110,200	5	0~3.5	0.37	212
单双层两用振动筛 Single-double deck vibrating screen	XSZ-73	600×300	2×2, 10×10, 6×6, 25×25	2	0~3.5 最大 Max 4.5	0.55	124
湿式细粒筛分级机 Wet fine screen	XSGS-74	537×200	0.5×0.5, 0.2×0.2, 0.15×0.15, 0.1×0.1	1	0~3.5 最大 Max 4.5	0.37	85
电磁振筛仪 Electro-magnetic vibrating screening instrument	XSDZ-80	φ 100	140,160,200,240,280,300,320,360,400,500	5	0~0.15	—	—
		φ 175					
		φ 200					

## 三、试验室用磨矿分级设备

## Laboratory Grinding &amp; Classifying Equipment

## 13. 密封式制样粉碎机（振动磨矿机）

## Sealed Sampling Crusher (Vibrating Mill)

- 全密封式结构，密封性能好
- 粉碎效率高
- 能耗低
- Whole sealing structure, good sealing effect.
- High crushing efficiency.
- Low energy consumption



## 密封式制样粉碎机（振动磨矿机）技术参数

Technical parameter of sealed sampling crusher (vibrating mill)

表 13 Table 13

型号 Model	钵钵材料 Material of grinding bowl	钵钵数量 Quantity of grinding Bowls	装料量 g/钵 Loading weight g/bowl	装料粒度 Loading particle size mm	出料粒度 Discharging particle size 目 mesh	粉碎时间 Crushing time min	电机功率 Motor power kw
GJ- I	锰钢 Manganese steel	1	100	<6	120-200	1~3	1.1
GJ- II		1	200-400	<12		3~5	1.5
GJ-AX		7	7×100	<6		3~5	1.5
MZ-1000		1	1000	<6		30	1.5
2 MZ-100		2	2×100	<6		5~10	1.1
3 MZ-100		3	3×100	<6		5~10	1.5
5 MZ-100		5	5×100	<6		3~5	1.5

## 14. 封闭式制样粉碎机

### Closed Sampling Crusher

▲ 该系列产品采用“压紧料钵防松动装置”轻便可靠

- 全密封式，无粉尘外溢，无需排风除尘
- 高频震动研磨，粉碎效率高，粒度均匀
- 低噪音<60 分贝

- 体积小，结构紧凑，不用安装

- Use “a device with compacting material bowl to avoid loosening”, portable and reliable.

- Whole sealing, no dust overflow, no need of air exhaust and dust removal.

- High frequency of vibration & grinding, high crushing efficiency, uniform particle size.

- Low noise, lower than 60 decibel.

- Small volume, compact structure, no need for installation.



#### 封闭式制样粉碎机技术参数

Technical parameter of closed sampling crusher

表 14 Table 14

型号 Model	一次制样数 Sampling No. Once 个 piece	装料粒度 Loading particle size mm	装料重量 Loading Weight g/钵 bowl	粉碎时间 Crushing time min	出料粒度 Discharging particle size 目 mesh	功率 Power kw

GJ100-1	1	<3	100×1	<2	120-200	1.1
GJ100-2	2	<3	100×2	<2	120-200	1.1
GJ100-3	3	<3	100×3	<2	120-200	1.5
GJ100-4	4	<3	100×4	<3	120-200	



## 15 连续磨矿用螺旋给料机 Spiral Feeder for Continuous Grinding

- ▲ 该机适用于连续磨矿作业中的原矿添加
- 通过变频调速器精确调节给矿量，避免磨矿过程中的空肚、胀肚现象
- 自带粉矿料斗，保障连续流程试验的顺利进行。
- This feeder applies to add original ore in the continuous grinding operation.
- Adjust the feeding amount accurately through the frequency governor, avoiding the “empty stomach” or “swelling stomach” phenomenon during the grinding.
- It has fine ore hopper itself, which guarantees the smooth running of continuous process test.

螺旋给料机技术参数 Technical parameter of spiral feeder for continuous grinding  
表 15 Table 15

型号 Model	螺旋直径 Diameter of spiral mm	螺旋转速 Rotating speed of spiral rpm	给料能力 Feeding capacity kg/h	给料粒度 Feeding particle size mm	料斗容积 Volume of hopper L	电机功率 Motor power kw
LXG26	26	100-700	3-40	≤4	2~12 任选 2~12 Option	0.37

## 16 试验室用单机磨矿设备 Laboratory Grinding Equipment with Single Machine

- ▲ 用于单机分批次精确计量磨矿作业
- 试验人员可根据磨矿粒度要求自行确定磨矿时间
- Used for single machine batchwise to accurately calculate and measure grinding operation.
- The experimenters can decide the grinding time according to the requirement of grinding particles.



## 试验室用单机磨矿设备技术参数

Laboratory grinding equipment with single machine

表 16 Table 16

型号 Model	筒体 转数 Rotation of Cylinder r/min	处理 能力 t/h Capacity	最大给 料粒度 Max feeding particle size mm	排料粒度 Discharging particle size mm	电动机 Electromotor		重量 Weight kg
					型号 Model	功率 Power kw	
XMB 三辊四筒棒磨机 XMB Rod mill with 3 rollers and 4 cylinders	120	0.15	2	-0.074	Y80L-4	0.37	115
XMB $\phi$ 160 $\times$ 200 棒磨机 Rod mill XMB $\phi$ 160 $\times$ 200	120	0.15	2	-0.074	Y80L-4	0.25	90
MBS $\phi$ 159 $\times$ 300 $\times$ 4 棒磨机 Rod mill MBS $\phi$ 159 $\times$ 300 $\times$ 4	120	0.15	2	-0.074	Y802-4	0.75	100
XMB $\phi$ 200 $\times$ 240 棒磨机 Rod mill XMB $\phi$ 200 $\times$ 240	110	0.15	2	-0.074	Y80L-4	0.55	155
XMB $\phi$ 240 $\times$ 300 棒磨机 Rod mill XMB $\phi$ 240 $\times$ 300	90	0.15	3	-0.074	Y80L-4	0.55	160
XMBL $\phi$ 420 $\times$ 600 溢流式棒磨机 Overflow rod mill XMBL $\phi$ 420 $\times$ 600	58	0.15	6	-0.5	Y100L-4	1.5	950
XMQ $\phi$ 150 $\times$ 50 锥形球磨机 Cone ball mill XMQ $\phi$ 150 $\times$ 50	112	0.15	3	-0.074	AO2-7114	0.25	110
XMQ $\phi$ 240 $\times$ 90 锥形球磨机 Cone ball mill XMQ $\phi$ 240 $\times$ 90	96	0.15	3	-0.074	Y80L-4	0.55	170
XMQ $\phi$ 350 $\times$ 160 锥形球磨机 XMQ $\phi$ 350 $\times$ 160		0.15	3	-0.074	Y90L-6-B <sub>5</sub>	1.1	300
XMQL $\phi$ 420 $\times$ 450 格子球磨机 Grid ball mill XMQL $\phi$ 420 $\times$ 450		0.15	5~10	-0.074	Y100L-4	1.5	800

XMQ $\phi$ 400 $\times$ 600 筒形球磨机 Cylindrical ball grind XMQ $\phi$ 400 $\times$ 600	48	0.15	2~15	-0.074	Y90L-4	1.5	560
--	----	------	------	--------	--------	-----	-----

## 17、 试验室用连续磨矿分级流程机组

### Laboratory Continuous Grinding & Classifying Flow Machine Set

- ▲ 该系列机组为我公司率先开发的专利产品
- 由磨机和螺旋分级机组成，用于连续磨矿分级作业
- 根据矿物性质和分选粒度要求改变磨矿量和分级溢流粒度
- 降低试验人员的劳动强度并避免过磨现象
- It is a patented product developed by Xinhai.
- It comprises grind and spiral classifier and is used for continuous grinding & classifying operation.
- Change the grinding amount and classifying overflow particle according to the mineral feature and separating particle size.
- Reduce labor intensity of the experimenters and avoid the overground phenomenon.



磨矿分级联合机组技术参数

Technical parameter of grinding & classifying aggregate unit

表 17 Table 17

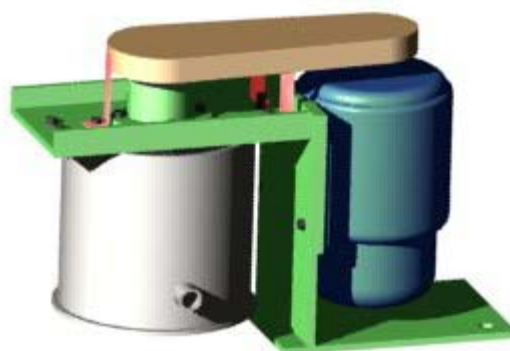
型号 Model	磨机规格 Mill specification mm	分级机规格 Classifier specification mm	-200 目产量 -200 mesh Output kg/h	装机功率 Installed power kw	磨矿介质 Grinding medium
SMF150	$\phi$ 150 $\times$ 300	$\phi$ 115	$\geq$ 4	1.1+0.37	钢球/钢棒
SMF240	$\phi$ 240 $\times$ 360	$\phi$ 150	$\geq$ 10	1.5+0.55	/砾石 Steel ball/Steel rod/Gravel

## 四、 试验室用选别设备

### Laboratory Separating Equipmen

#### 18. 试验室用搅拌槽

### Laboratory Agitation Tank



您需要的，正是我们能做到的  
What you need is what we can do!

▲ 用于连续流程试验时制备矿浆、浮选前混合药剂等。

Used for preparing slurry, mixing medicament before floatation during the continuous flow test

### 试验室用搅拌槽技术参数

Technical parameter of Laboratory agitation tank

表 18 Table 18

型号 Model	槽体规格 Tank body specification mm	有效容积 Effective Volume L	电机功率 Motor power kw	主轴转速 Rotating speed of main shaft rpm	槽体材料 Tank body material
JB150	φ 150×150	2.6	0.18	1028	不锈钢 Stainless steel
JB200	φ 200×200	6.25	0.37	980	不锈钢 Stainless steel

## 19. 试验室用单槽浮选机

### Laboratory Single-cell Floatation Cell



#### 单槽浮选机技术参数

Technical parameter of single-cell floatation cell

表 19 Table 19

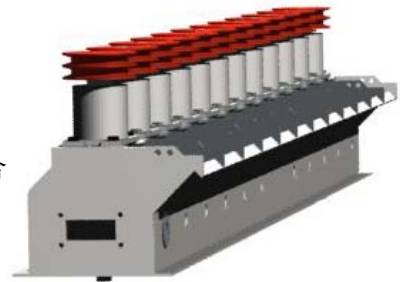
型号 Model	矿物粒度 Particle size of mineral mm	有效容积 Effective volume L	叶轮直径 Impeller diameter mm	电机功率 Motor power W	刮板转数 Rotation of Scraper rpm
XFD-0.5	-0.2	0.5	45	75	15/30
XFD-0.75	-0.2	0.75	45	75	15/30

XFD-1.0	-0.2	1	50	75	15/30
XFD-1.5	-0.2	1.5	55	75	15/30
XFD-3.0	-0.2	3	60	250	7.9/19.1

## 20. 试验室用连续流程浮选机组

### Laboratory Continuous Flow Flotation Cell Cluster

- ▲ 该机组为我公司借鉴国外先进技术独立开发的专利产品
- 可模拟现场工艺流程进行小型工业性闭路试验
- 具有自吸浆、自吸气功能，选别流程可以任意更改
- 确保回收率、精矿/尾矿品位等各项指标试验数据与生产数据吻合
- 适用于酸性、碱性、中性的各种矿浆的浮选回收试验
- 减少试验人员的劳动强度并避免人为因素造成的指标不精确性
- It is the patented product developed by Xinhai company independently, using advanced technology abroad for reference.
- It can simulate spot technological flow to carry on small-scale industrial closed-circuit test.
- It is able to automatically suck slurry and air; the separation flow can be changed randomly.
- It guarantees the test data of every index of the recovery rate, grade of the headings and tailings coinciding with the production data.
- Apply to the floatation recovery experiment of all kinds of the acid, alkaline and medium slurry.
- Reduce experimenters' labor intensity and avoid the inaccuracy of the index caused by human factor.



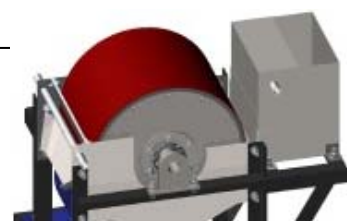
浮选机组技术参数 Technical parameter of floatation cell cluster

表 20 Table 20

型号 Model	槽体数量 No. of Tank Body	单槽容积 Volume of single tank L	电机功率(kw) Motor Power		吸浆吸气形式 Suction slurry and suction air Model	特点 Feature
			传动 Transmission	刮板 Scrapper		
FX15	2~12	1.5	0.55×3	0.18	自吸 Automatic suction	连续作业 Continuous operation
FX3	2~12	3	1.1	0.18	自吸 Automatic suction	连续作业 Continuous operation

## 21. 试验室用湿式筒式磁选机

您需要的，正是我们能做到的！  
What you need is what we can do!



# Laboratory Wet Drum Magnetic Separator

- ▲ 该设备是我公司独立开发的专利产品
- 大范围内无级调节筒体表面磁感应强度
- 可用于阶段定量选别试验和连续流程选别试验
- 针对不同磁感应强度条件下进行回收率、精矿/尾矿品位全面试验和分析。
- This equipment is a patented product developed by our company independently.
- Infinitely variable control magnetic induction intensity of drum surface in a large range.
- It can be used for stage quantitative separation test and continuous flow separation test.
- It can give a comprehensive test and analysis of recovery rate, grade of headings or tailings under different magnetic induction intensity.

## 试验室用湿式筒式磁选机技术参数

Technical parameter of laboratory wet drum magnetic separator

表 21 Table 21

型号 Model	筒体规格 Specification of drum mm	筒体表面平均 磁感应强度(T) Average magnetic induction intensity of drum surface	给料粒度 Feeding particle size mm	筒体转速 Rotating speed of drum rpm	电机功率 Motor power kw
DCX300	φ 300×234	0~0.5	-0.5	15.75	0.55

## 22. 试验室用中高场强磁选机

### Laboratory Medium-Strong Field Intensity Magnetic Separator

- ▲ 该设备是我公司独立开发的专利产品
- 大范围内无级调节筒体表面磁感应强度
- 可用于阶段定量选别试验和连续流程选别试验
- 针对不同磁感应强度条件下进行回收率、精矿/尾矿品位全面试验和分析。



- This equipment is a patented product developed by our company independently.
- Infinitely variable control magnetic induction intensity of drum surface in a large range.
- It can be used for stage quantitative separation test and continuous flow separation test.
- It can give a comprehensive test and analysis of recovery rate, grade of headings or tailings under different magnetic induction intensity.

### 中高场强磁选机技术参数

Technical parameter of medium-strong field intensity magnetic separator

表 22 Table 22

型号 Model	结构形式 Structural Formation	皮带表面平均 磁感应强度 Average magnetic induction intensity of belt surface T	给料粒度 Feeding particle size mm	皮带线速度 Linear velocity of belt m/s	电机功率 Motor power kw
CXJ400	连续带式 Continuous belt type	0.2~1.2	-1	2.3	0.55

## 23. 实验室用磁选管

### Laboratory Magnetic Tube



### 实验室用磁选管技术参数

Technical parameter of laboratory magnetic tube

表 23 Table 23

型号 Model	磁场强度 Magnetic field intensity H	直径 Diameter mm	移动行程 Moving stroke mm	摆动频率 Swaying frequency 次/分 times/m	电压 Voltage V	给入物料粒度 Feeding particle size mm
XCGS-50	200KA/M	50	40	70	220	0.5

## 五、 实验室用浸出设备

### Laboratory Leaching Equipment

#### 24. 实验室用单槽浸出设备 Laboratory Single Tank Leaching Equipment

实验室用单槽浸出设备技术参数

Technical parameter of laboratory single tank leaching equipment

表 24 Table 24

项 目 Item		单位 Unit	技术参数 Parameter		
搅拌机规格 Specification of agitator		L	1.5	3	5.5
搅拌槽容积 Volume of agitation tank		L	1.5	3	5.5
叶轮直径 Diameter of impeller	1	mm	φ 31		
	2	mm	φ 39		
	3	mm	φ 48		
叶轮转速 Rotating speed of impeller	1	r/min	950		
	2	r/min	1400		
	3	r/min	1750		
叶轮周速 Circular velocity of impeller	1	m/s	1.54	2.27	2.84
	2	m/s	1.94	2.86	3.57
	3	m/s	2.39	3.52	4.4
电动机 Electromotor	型号 Model		JW6314		
	功率 Power	kW	0.18		
	转数 Revolution	rpm	1400		
外型尺寸 External	长 Length	mm	505		

dimension	宽 Width	mm	304
	高 Height	mm	633
重量 Weight		kg	40

## 25. 试验室用连续浸出槽

### Laboratory Continuous Leaching Tank

试验室用连续浸出槽技术参数

Technical parameter of laboratory continuous leaching tank

表 25 Table 25

型号 Model	槽体直径 Diameter of tank body mm	槽体高度 Height of tank body mm	有效容积 Effective volume L	叶轮转速 Rotating speed of impeller rpm	功率 Power kw
SJC-350×400	350	400	36	150~300	0.55

## 六、试验室用固液分离设备

### Laboratory Solid & Liquid Separation Equipment

#### 26. 试验室用过滤机

#### Laboratory Filter

试验室用过滤机技术参数

Technical parameter of laboratory filter

表 26 Table 26

型号 Model	过滤盘直径 (mm) Diameter of filtration disc	过滤盘容积(L) Volume of filtration disc	真空度 Vacuum Mpa	矿浆粒 度	矿浆浓度 Concentration of slurry	整机电耗 Electrical consumption
-------------	--	--	----------------------	----------	------------------------------------	-----------------------------------

	大盘 Big disk	小盘 Small disk	大盘 Big disk	小盘 Small disk		Particle size of slurry mm	%	of whole machine kw
DL-5C	240	120	3.6	0.64	$\leq 0.09$	$\leq 0.5$	$\geq 10\sim 30$	$\leq 1.6$

## 27. 试验室用斜板浓缩机

### Laboratory Chute board Thickener

试验室用斜板浓缩机技术参数

Technical parameter of laboratory chute board thickener

表 27 Table 27

型号 Model	浓缩箱宽度 Width of thickening Box mm	斜板数量 No. of Chute boards	沉降面积 Sedimentation area m <sup>3</sup>	处理能力 Capacity kg/h
SXN-200	200	10	0.8	6~75